

# Invacare® Top End® T5™ 7000 Series Tennis Wheelchair



Custom frames may have stylistic variations. Dimensional properties and tolerances committed to by Top End are defined in the Measurement Definitions Documents, which can be found in the resource center on [www.topendwheelchair.com](http://www.topendwheelchair.com)

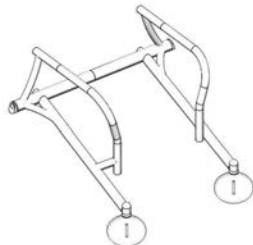
| PROVIDER / CUSTOMER INFORMATION:       |  |  |                   |
|--|--|--|-------------------|
| Provider Information:                  |  | End User Information:                  |                   |
| Date:                                  |  | Name:                                  | Height:           |
| IVC Acct #:                            |  | Ship to Address:                       | Weight (lbs.):    |
| Contact:                               |  | Address Line 2:                        | Leg Length (in.): |
| Phone #:                               |  | City:                                  | Hip Width (in.):  |
| Fax/Email:                             |  | State:                                 | Zip:              |
| <input type="radio"/> Ship to Provider |  | <input type="radio"/> Ship to End User |                   |
|  |  | Phone #:                               |                   |
|  |  | Email:                                 |                   |

| ORDER REQUEST TYPE:         |                           |
|-----------------------------|---------------------------|
| <input type="radio"/> Order | PO # <input type="text"/> |

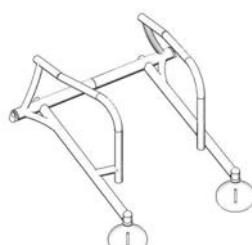
| BASE MODEL:                            |   |         |
|--|---|---------|
| <input checked="" type="radio"/> 10003 | Top End T5 7000 Series Tennis Wheelchair<br><i>Note: Chair ordered without wheels, tires, axles or handrims starts at \$3,125</i> | \$4,073 |

| Assembly: <i>(see definitions)</i>                             |           |       |
|--|-----------|-------|
| <input checked="" type="radio"/> 10048                         | Assembled | \$0   |
| Shipping:  |           |       |
| Shipping Fee<br><i>(Continental US Only - See definitions)</i> |           | \$150 |

| FRAME TYPE: <i>(see definitions)</i> |                                      |       |
|--------------------------------------|--------------------------------------|-------|
| <input type="radio"/> 15168          | Standard Seat Style Frame            | \$0   |
| <input type="radio"/> 15169          | Tapered Seat Style Frame             | \$151 |
| <input type="radio"/> 15173          | Heavy Duty Standard Seat Style Frame | \$602 |

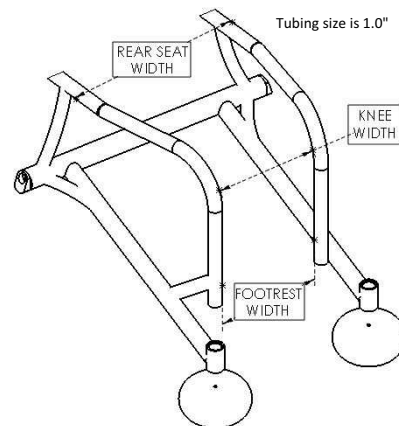


Standard and Heavy Duty  
Seat Style Frame



Tapered Seat Style Frame

| KNEE WIDTH:  |  |      |
|--|--|------|
| <i>(see diagram below - Only Available with Tapered Seat Style Frame)<br/>Must be at least 3.0" smaller than the Rear Seat Width - Measured at the widest point of athletes lower leg (inside to inside of the tubing)</i> |  |      |
| <input type="radio"/> 15133  | 8.0" Knee Width  | \$0  |
| <input type="radio"/> 15139  | 9.0" Knee Width  | \$0  |
| <input type="radio"/> 15145  | 10.0" Knee Width                                       | \$0  |
| <input type="radio"/> 15146  | 11.0" Knee Width                                       | \$0  |
| <input type="radio"/> 15147  | 12.0" Knee Width                                       | \$0  |
| <input type="radio"/> 15148  | 13.0" Knee Width                                       | \$0  |
| <input type="radio"/> 15151  | Custom Knee Width<br><i>(See Specials Request Box)</i> | \$54 |



| REAR SEAT WIDTH:  |                       |     |
|---|-----------------------|-----|
| <i>(Measured from outside to outside of the tubing - See Diagram)</i> |                       |     |
| <input type="radio"/> 15009   | 12.0" Rear Seat Width | \$0 |
| <input type="radio"/> 15010   | 12.5" Rear Seat Width | \$0 |
| <input type="radio"/> 15011   | 13.0" Rear Seat Width | \$0 |
| <input type="radio"/> 15012   | 13.5" Rear Seat Width | \$0 |
| <input type="radio"/> 15013   | 14.0" Rear Seat Width | \$0 |
| <input type="radio"/> 15014   | 14.5" Rear Seat Width | \$0 |
| <input type="radio"/> 15015   | 15.0" Rear Seat Width | \$0 |
| <input type="radio"/> 15016   | 15.5" Rear Seat Width | \$0 |
| <input type="radio"/> 15017   | 16.0" Rear Seat Width | \$0 |
| <input type="radio"/> 15018   | 16.5" Rear Seat Width | \$0 |
| <input type="radio"/> 15019   | 17.0" Rear Seat Width | \$0 |
| <input type="radio"/> 15020   | 17.5" Rear Seat Width | \$0 |
| <input type="radio"/> 15021   | 18.0" Rear Seat Width | \$0 |
| <input type="radio"/> 15022   | 18.5" Rear Seat Width | \$0 |

Invacare Corporation Top End Division

All rights reserved. Trademarks are identified by the symbols ™ and ®. All trademarks are owned by or licensed to Invacare Corporation unless otherwise noted. Specifications and prices are subject to change without notification.

# Invacare® Top End® T5™ 7000 Series

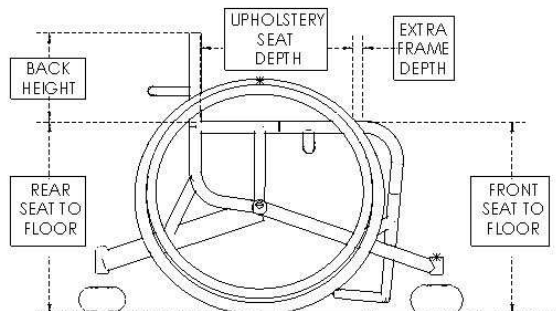
## Tennis Wheelchair



Custom frames may have stylistic variations. Dimensional properties and tolerances committed to by Top End are defined in the Measurement Definitions Documents, which can be found in the resource center on [www.topendwheelchair.com](http://www.topendwheelchair.com)

| SEAT DEPTH: (see diagram below)      |   |      |
|--------------------------------------|---|------|
| SEAT DEPTH (Upholstery):             |   |      |
| <input type="radio"/> 15038          | 12.0" Seat Depth, Upholstery                                | \$0  |
| <input type="radio"/> 15040          | 13.0" Seat Depth, Upholstery                                | \$0  |
| <input type="radio"/> 15042          | 14.0" Seat Depth, Upholstery                                | \$0  |
| <input type="radio"/> 15044          | 15.0" Seat Depth, Upholstery                                | \$0  |
| <input type="radio"/> 15046          | 16.0" Seat Depth, Upholstery                                | \$0  |
| <input type="radio"/> 15048          | 17.0" Seat Depth, Upholstery                                | \$0  |
| <input type="radio"/> 15050          | 18.0" Seat Depth, Upholstery                                | \$0  |
| <input type="radio"/> 15052          | 19.0" Seat Depth, Upholstery                                | \$0  |
| <input type="radio"/> 15399          | Custom Seat Depth, Upholstery<br>(See Specials Request Box) | \$54 |
| EXTRA FRAME DEPTH: (see definitions) |   |      |
| <input type="radio"/> 15142          | Standard - 1.0" beginning at end of seat depth              | \$0  |
| <input type="radio"/> 15400          | Custom Extra Frame Depth<br>(See Specials Request Box)      | \$54 |

| BACK HEIGHT: (see diagram below) |  |      |
|----------------------------------|--|------|
| ADJUSTABLE:                      |  |      |
| <input type="radio"/> 15126      | Adjustable 9" to 11"                                   | \$0  |
| <input type="radio"/> 15127      | Adjustable 10" to 14"                                  | \$0  |
| <input type="radio"/> 15128      | Adjustable 14" to 18"                                  | \$0  |
| FIXED:                           |  |      |
| <input type="radio"/> 15101      | Fixed at 8.0"  | \$0  |
| <input type="radio"/> 15103      | Fixed at 9.0"  | \$0  |
| <input type="radio"/> 15105      | Fixed at 10.0"   | \$0  |
| <input type="radio"/> 15107      | Fixed at 11.0"   | \$0  |
| <input type="radio"/> 15109      | Fixed at 12.0"   | \$0  |
| <input type="radio"/> 15132      | Custom Fixed Back Height<br>(See Specials Request Box) | \$54 |



| SEAT HEIGHTS: (see diagram below) |   |      |
|-----------------------------------|---|------|
| FRONT SEAT TO FLOOR:              |   |      |
| <input type="radio"/> 15060       | 14.5" Front Seat to Floor                                       | \$0  |
| <input type="radio"/> 15061       | 15.0" Front Seat to Floor                                       | \$0  |
| <input type="radio"/> 15062       | 15.5" Front Seat to Floor                                       | \$0  |
| <input type="radio"/> 15063       | 16.0" Front Seat to Floor                                       | \$0  |
| <input type="radio"/> 15064       | 16.5" Front Seat to Floor                                       | \$0  |
| <input type="radio"/> 15065       | 17.0" Front Seat to Floor                                       | \$0  |
| <input type="radio"/> 15066       | 17.5" Front Seat to Floor                                       | \$0  |
| <input type="radio"/> 15067       | 18.0" Front Seat to Floor                                       | \$0  |
| <input type="radio"/> 15068       | 18.5" Front Seat to Floor                                       | \$0  |
| <input type="radio"/> 15069       | 19.0" Front Seat to Floor                                       | \$0  |
| <input type="radio"/> 15070       | 19.5" Front Seat to Floor                                       | \$0  |
| <input type="radio"/> 15071       | 20.0" Front Seat to Floor                                       | \$0  |
| <input type="radio"/> 15072       | 20.5" Front Seat to Floor                                       | \$0  |
| <input type="radio"/> 15073       | 21.0" Front Seat to Floor                                       | \$0  |
| <input type="radio"/> 15167       | Custom Front Seat to Floor Height<br>(See Specials Request Box) | \$54 |
| REAR SEAT TO FLOOR:               |   |      |
| <input type="radio"/> 15080       | 14.5" Rear Seat to Floor  | \$0  |
| <input type="radio"/> 15081       | 15.0" Rear Seat to Floor  | \$0  |
| <input type="radio"/> 15082       | 15.5" Rear Seat to Floor  | \$0  |
| <input type="radio"/> 15083       | 16.0" Rear Seat to Floor  | \$0  |
| <input type="radio"/> 15084       | 16.5" Rear Seat to Floor  | \$0  |
| <input type="radio"/> 15085       | 17.0" Rear Seat to Floor  | \$0  |
| <input type="radio"/> 15086       | 17.5" Rear Seat to Floor  | \$0  |
| <input type="radio"/> 15087       | 18.0" Rear Seat to Floor  | \$0  |
| <input type="radio"/> 15088       | 18.5" Rear Seat to Floor  | \$0  |
| <input type="radio"/> 15089       | 19.0" Rear Seat to Floor  | \$0  |
| <input type="radio"/> 15090       | 19.5" Rear Seat to Floor  | \$0  |
| <input type="radio"/> 15091       | 20.0" Rear Seat to Floor  | \$0  |
| <input type="radio"/> 15092       | 20.5" Rear Seat to Floor  | \$0  |
| <input type="radio"/> 15093       | 21.0" Rear Seat to Floor  | \$0  |
| <input type="radio"/> 15166       | Custom Rear Seat to Floor Height<br>(See Specials Request Box)  | \$54 |

| ANTI-TIP:                   |   |       |
|-----------------------------|---|-------|
| <input type="radio"/> 20030 | Adjustable Height, Single                         | \$0   |
| <input type="radio"/> 20032 | Adjustable Height, Telescoping, Removable, Single | \$301 |

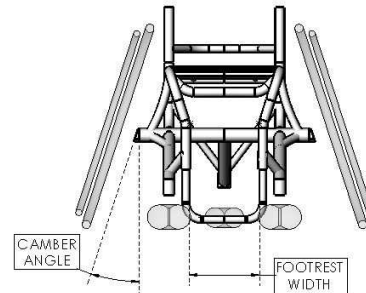
# Invacare® Top End® T5™ 7000 Series Tennis Wheelchair



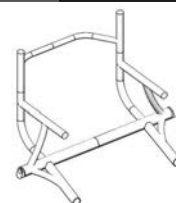
Custom frames may have stylistic variations. Dimensional properties and tolerances committed to by Top End are defined in the Measurement Definitions Documents, which can be found in the resource center on [www.topendwheelchair.com](http://www.topendwheelchair.com)

| FOOTREST: CHOOSE ONLY 1 STYLE (see definitions) (see diagram) |  |       |
|---|--|-------|
| TELESCOPING STYLE:  |  |       |
| <input type="radio"/> 60003                                   | Telescoping Style Footrest<br>Adjustable Height  | \$0   |
| FOOTREST PLATE:   |  |       |
| <input type="radio"/> 60036                                   | Telescoping, Platform Plate<br><i>Offers Most Adjustment</i>   | \$70  |
| <input type="radio"/> 60024                                   | Telescoping, No Plastic Cover  | \$0   |
| <input type="radio"/> 60026                                   | Telescoping, with Plastic Cover  | \$60  |
| FOOTREST WIDTH:   |  |       |
| <input type="radio"/> 60073                                   | Standard Footrest Width<br>Seat Width Minus 5.0"<br>(Minimum Footrest Width - 8.0")  | \$0   |
| <input type="radio"/> 60078                                   | Custom Footrest Width<br>(See Specials Request Box)  | \$54  |
| FOOTREST HEIGHT FROM FLOOR:                                   |  |       |
| <input type="radio"/> 60022                                   | 1.0" - 5.5" From Floor   | \$0   |
| <input type="radio"/> 60023                                   | 4.0" - 7.0" From Floor   | \$60  |
| FOOTREST LOCATION:  |  |       |
| <input type="radio"/> 60033                                   | Standard Footrest Location<br>95 Degrees - Front Frame to Footrest   | \$0   |
| <input type="radio"/> 60032                                   | Custom Footrest Location<br><i>May specify front frame angle or distance from front of footrest to center of headtube.</i><br>(See Specials Request Box) | \$54  |
| UPGRADE OPTIONS:  |  |       |
| <input type="radio"/> 60030                                   | Small Click Strap, Single Pad  | \$90  |
| RECESSED PLATFORM PLATE:                                      |  |       |
| <input type="radio"/> 60007                                   | Platform Plate Style, Adjustable   | \$241 |
| FOOTREST PLATE:   |  |       |
| <input type="radio"/> 60036                                   | Platform Plate   | \$0   |
| FOOTREST PLATE WIDTH:   |  |       |
| <input type="radio"/> 60037                                   | Standard   | \$0   |
| FOOTREST HEIGHT FROM FLOOR:                                   |  |       |
| <input type="radio"/> 60022                                   | 1.0" - 5.5" From Floor   | \$0   |
| FOOTREST LOCATION:  |  |       |
| <input type="radio"/> 60033                                   | Standard   | \$0   |

| CAMBER ANGLE: (see diagram below) |                  |     |
|-----------------------------------|------------------|-----|
| <input type="radio"/> 45008       | 15 Degree Camber | \$0 |
| <input type="radio"/> 45009       | 18 Degree Camber | \$0 |
| <input type="radio"/> 45010       | 20 Degree Camber | \$0 |



| CENTER OF GRAVITY: (see diagram below) |  |       |
|--|--|-------|
| FIXED:                                 |  |       |
| <input type="radio"/> 45052            | Fixed at 4.5" with Welded Backrest                           | \$0   |
| <input type="radio"/> 45053            | Fixed at 5.0" with Welded Backrest                           | \$0   |
| <input type="radio"/> 45054            | Fixed at 5.5" with Welded Backrest                           | \$0   |
| <input type="radio"/> 45055            | Fixed at 6.0" with Welded Backrest                           | \$0   |
| <input type="radio"/> 45056            | Fixed at 6.5" with Welded Backrest                           | \$0   |
| <input type="radio"/> 45057            | Fixed at 7.0" with Welded Backrest                           | \$0   |
| <input type="radio"/> 45058            | Fixed at 7.5" with Welded Backrest                           | \$0   |
| <input type="radio"/> 45059            | Fixed at 8.0" with Welded Backrest                           | \$0   |
| <input type="radio"/> 45079            | Custom Fixed Center of Gravity<br>(See Specials Request Box) | \$54  |
| ADJUSTABLE: (see exclusions)           |  |       |
| <input type="radio"/> 45075            | Adjustable 3" to 5" with Adjustable Angle Bolt - On Backrest | \$120 |
| <input type="radio"/> 45076            | Adjustable 4" to 6" with Adjustable Angle Bolt - On Backrest | \$120 |
| <input type="radio"/> 45080            | Adjustable 5" to 7" with Adjustable Angle Bolt - On Backrest | \$120 |

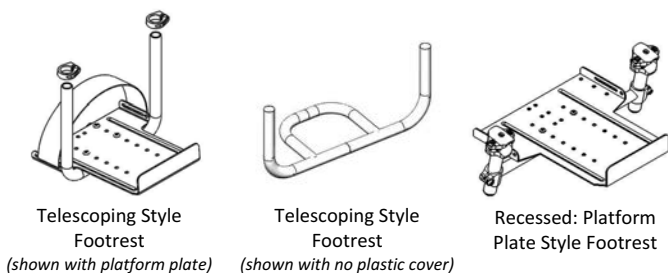
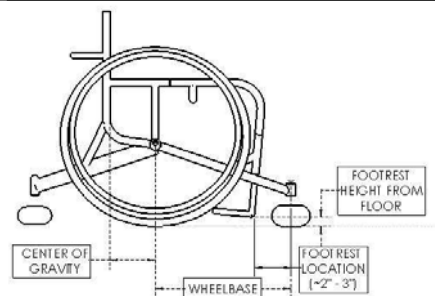


Fixed Center of Gravity



Adjustable Center of Gravity

| WHEELBASE: (see definitions) (see Product Guide - Page 8) |  |      |
|---|--|------|
| <input type="radio"/> 75014                               | Standard Wheelbase                             | \$0  |
| <input type="radio"/> 75023                               | Custom Wheelbase<br>(See Specials Request Box) | \$54 |



# Invacare® Top End® T5™ 7000 Series

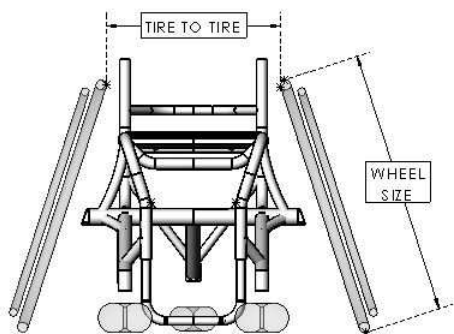
## Tennis Wheelchair



Custom frames may have stylistic variations. Dimensional properties and tolerances committed to by Top End are defined in the Measurement Definitions Documents, which can be found in the resource center on [www.topendwheelchair.com](http://www.topendwheelchair.com)

| SIDE GUARDS:                            |   |       |
|---|---|-------|
| FIXED ALUMINUM: <i>(see exclusions)</i> |   |       |
| <input type="radio"/> 20016             | Omit Side Guards  | \$0   |
| <input type="radio"/> 20004             | Fixed Aluminum: Clamp - On<br><i>(only available with adjustable Center of Gravity)</i> | \$151 |
| <input type="radio"/> 20005             | Fixed Aluminum: 6" Above Seat   | \$211 |
| <input type="radio"/> 20020             | Fixed Aluminum: Same Height as Wheel  | \$211 |
| <input type="radio"/> 20015             | Fixed Aluminum: Custom Height<br><i>(See Specials Request Box)</i>                      | \$241 |
| WELDED TUBES: <i>(see exclusions)</i>   |   |       |
| <input type="radio"/> 20006             | Welded Tube, 6" Above Seat  | \$542 |
| <input type="radio"/> 20018             | Welded Tube: Custom Height<br><i>(See Specials Request Box)</i>                         | \$572 |

| UPHOLSTERY: <i>(see definitions)</i> |  |       |
|--------------------------------------|--|-------|
| MATERIAL & COLOR:                    |  |       |
| <input type="radio"/> 30001          | Nylon, Black Upholstery  | \$0   |
| SEAT UPHOLSTERY STYLE:               |  |       |
| <input type="radio"/> 75013          | Standard Adjustable Tension Seat Upholstery  | \$0   |
| <input type="radio"/> 75007          | Solid Seat   | \$211 |
| BACK UPHOLSTERY STYLE:               |  |       |
| <input type="radio"/> 30012          | Adjustable Tension Back Upholstery   | \$0   |
| <input type="radio"/> 30004          | Adjustable Tension Back Upholstery with Leather Flaps and Aluminum Dome Plugs <i>(see definitions)</i> | \$90  |
| SEAT CUSHIONS:                       |  |       |
| <input type="radio"/> 30005          | 2" Soft Foam Cushion   | \$0   |
| <input type="radio"/> 30006          | 3" Soft Foam Cushion   | \$37  |
| <input type="radio"/> 30008          | 2" Hard Foam Cushion   | \$60  |
| <input type="radio"/> 30009          | 3" Hard Foam Cushion   | \$90  |
| <input type="radio"/> 30010          | 4" Hard Foam Cushion   | \$102 |



| WHEEL SETS: <i>(see Wheel Size Guide - Page 8 for recommendations)</i> |  |                           |
|--|--|---------------------------|
| WHEEL SIZE:  |  |                           |
| <input type="radio"/> 50190  | 24" (540)  | \$0                       |
| <input type="radio"/> 50191  | 25" (559)  | \$0                       |
| <input type="radio"/> 50192  | 26" (590)  | \$0                       |
| <input type="radio"/> 50193  | 700C   | \$0                       |
| WHEEL STYLE:   |  |                           |
| High Performance Wheels:   |  |                           |
| <input type="radio"/> 50194  | Omit Wheels & Axles, Build for HP                        | -\$100<br><i>(credit)</i> |
| <input type="radio"/> 50196  | High Performance   | \$0                       |
| Spinergy Wheels:   |  |                           |
| <input type="radio"/> 50195  | Omit Wheels & Axles, Build for Spinergy                  | -\$100<br><i>(credit)</i> |
| <input type="radio"/> 50197  | Spinergy SLX   | \$970                     |
| <input type="radio"/> 50198  | Spinergy XSLX  | \$1,030                   |
| SPOKE COLOR:   |  |                           |
| <input type="radio"/> 50273  | Red  | \$0                       |
| <input type="radio"/> 50274  | Yellow   | \$0                       |
| <input type="radio"/> 50275  | Green  | \$0                       |
| <input type="radio"/> 50276  | Blue   | \$0                       |
| <input type="radio"/> 50277  | Pink   | \$0                       |
| <input type="radio"/> 50278  | Purple   | \$0                       |
| <input type="radio"/> 50279  | Orange   | \$0                       |
| <input type="radio"/> 50280  | Black  | \$0                       |
| <input type="radio"/> 50282  | White  | \$0                       |
| <input type="radio"/> 50283  | Metal <i>(High Performance wheels only)</i>              | \$0                       |
| <input type="radio"/> 50281  | Custom <i>(See Page 7)</i>                               | \$241                     |
| HANDRIMS:  |  |                           |
| <input type="radio"/> 50307  | Omit Handrims  | -\$40<br><i>(credit)</i>  |
| <input type="radio"/> 50297  | 6 Tabs, Aluminum, Anodized                               | \$0                       |
| HANDRIM MOUNTING:  |  |                           |
| <input type="radio"/> 50308  | Standard Mount   | \$0                       |
| <input type="radio"/> 50309  | Close Mount  | \$0                       |
| <input type="radio"/> 50310  | Close Mount with Cut Tabs                                | \$82                      |
| TIRES:   |  |                           |
| <input type="radio"/> 50169  | Omit Tires   | -\$30<br><i>(credit)</i>  |
| <input type="radio"/> 50216  | Primo Grey   | \$0                       |
| <input type="radio"/> 50244  | IRC Grey <i>700C Wheels Only</i>                         | \$151                     |
| <input type="radio"/> 50243  | IRC Red <i>700C Wheels Only</i>                          | \$151                     |
| TIRE TO TIRE:  |  |                           |
| <input type="radio"/> 15155  | Standard Tire to Tire<br><i>(Seat Width Plus 2.5")</i>   | \$0                       |
| <input type="radio"/> 15157  | Custom Tire to Tire<br><i>(See Specials Request Box)</i> | \$54                      |

# Invacare® Top End® T5™ 7000 Series

## Tennis Wheelchair



Custom frames may have stylistic variations. Dimensional properties and tolerances committed to by Top End are defined in the Measurement Definitions Documents, which can be found in the resource center on [www.topendwheelchair.com](http://www.topendwheelchair.com)

| ACCESSORIES:                           |                         |       |
|--|-------------------------|-------|
| STANDARD:                              |                         |       |
| <input checked="" type="radio"/> 25066 | Calf Strap              | \$0   |
| UPGRADABLE:                            |                         |       |
| SAFETY:                                |                         |       |
| <input type="radio"/> 25005            | Front Frame Protector   | \$48  |
| <input type="radio"/> 25004            | Rear Frame Protector    | \$54  |
| POSITIONING:                           |                         |       |
| <input type="radio"/> 25001            | Click Strap, 8" Small   | \$90  |
| <input type="radio"/> 25002            | Click Strap, 10" Medium | \$97  |
| <input type="radio"/> 25003            | Click Strap, 12" Large  | \$109 |

| FRAME COLOR:                |        |                    |     |
|-----------------------------|--------|--------------------|-----|
| <input type="radio"/> 55018 | Black  | Wet Black          | \$0 |
| <input type="radio"/> 55019 | Black  | Black Prism        | \$0 |
| <input type="radio"/> 55017 | Black  | Stealth Black      | \$0 |
| <input type="radio"/> 55010 | Blue   | Midnight Blue      | \$0 |
| <input type="radio"/> 55011 | Blue   | Royal Blue         | \$0 |
| <input type="radio"/> 55012 | Blue   | Electric Blueberry | \$0 |
| <input type="radio"/> 55023 | Grey   | Stealth Grey       | \$0 |
| <input type="radio"/> 55053 | Green  | Agriculture Green  | \$0 |
| <input type="radio"/> 55008 | Green  | Grasshopper Green  | \$0 |
| <input type="radio"/> 55054 | Green  | Neon Green         | \$0 |
| <input type="radio"/> 55006 | Orange | Sunkissed Orange   | \$0 |
| <input type="radio"/> 55005 | Orange | Simple Orange      | \$0 |
| <input type="radio"/> 55051 | Orange | Neon Orange        | \$0 |
| <input type="radio"/> 55015 | Pink   | Bubblegum Pink     | \$0 |
| <input type="radio"/> 55057 | Pink   | Neon Pink          | \$0 |
| <input type="radio"/> 55055 | Purple | Lilac Purple       | \$0 |
| <input type="radio"/> 55001 | Red    | Simple Red         | \$0 |
| <input type="radio"/> 55002 | Red    | Tangerine Red      | \$0 |
| <input type="radio"/> 55003 | Red    | Raspberry Red      | \$0 |
| <input type="radio"/> 55050 | Red    | Neon Red           | \$0 |
| <input type="radio"/> 55020 | Silver | Silver Metallic    | \$0 |
| <input type="radio"/> 55016 | White  | White Snow         | \$0 |
| <input type="radio"/> 55007 | Yellow | Safety Yellow      | \$0 |
| <input type="radio"/> 55052 | Yellow | Neon Yellow        | \$0 |
| <input type="radio"/> 55070 | Raw    | Buffed Aluminum    | \$0 |

Note: All Special requests are subject to approval, additional charges and additional lead time.

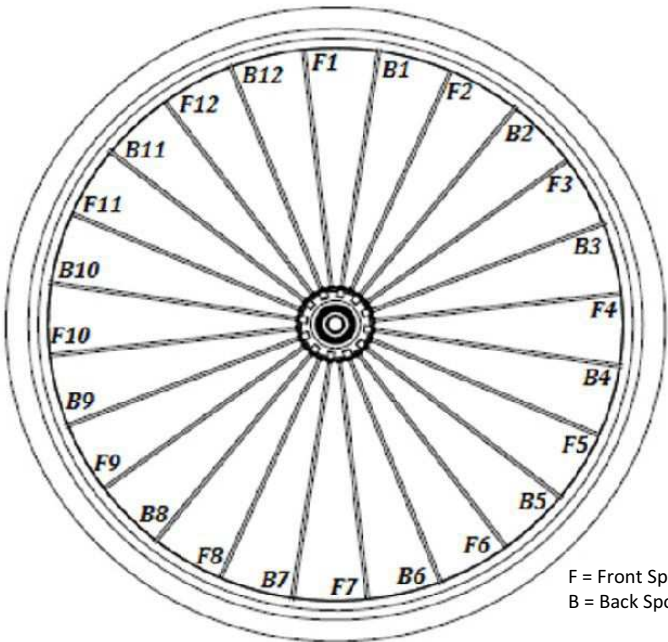
|                    |  |
|--------------------|--|
| Special Request 1) |  |
| Special Request 2) |  |
| Special Request 3) |  |
| Special Request 4) |  |
| Special Request 5) |  |



# Invacare® Top End® T5™ 7000 Series Tennis Wheelchair



Custom frames may have stylistic variations. Dimensional properties and tolerances committed to by Top End are defined in the Measurement Definitions Documents, which can be found in the resource center on [www.topendwheelchair.com](http://www.topendwheelchair.com)



F = Front Spoke  
B = Back Spoke

| CUSTOM SPINERGY SLX: |  |
|----------------------|--|
| Wheel Size           |  |
| Hub Color            |  |

| CUSTOM SPINERGY SLX: |  |
|----------------------|--|
| Spoke Color:         |  |
| F1                   |  |
| B1                   |  |
| F2                   |  |
| B2                   |  |
| F3                   |  |
| B3                   |  |
| F4                   |  |
| B4                   |  |
| F5                   |  |
| B5                   |  |
| F6                   |  |
| B6                   |  |
| F7                   |  |
| B7                   |  |
| F8                   |  |
| B8                   |  |
| F9                   |  |
| B9                   |  |
| F10                  |  |
| B10                  |  |
| F11                  |  |
| B11                  |  |
| F12                  |  |
| B12                  |  |



F = Front Spoke  
B = Back Spoke

| CUSTOM SPINERGY XSLX: |  |
|-----------------------|--|
| Wheel Size            |  |
| Hub Color             |  |

| CUSTOM SPINERGY XSLX: |  |
|-----------------------|--|
| Spoke Color:          |  |
| F1                    |  |
| B1                    |  |
| F2                    |  |
| B2                    |  |
| F3                    |  |
| B3                    |  |
| F4                    |  |
| B4                    |  |
| F5                    |  |
| B5                    |  |
| F6                    |  |
| B6                    |  |
| F7                    |  |
| B7                    |  |
| F8                    |  |
| B8                    |  |
| F9                    |  |
| B9                    |  |
| F10                   |  |
| B10                   |  |
| F11                   |  |
| B11                   |  |
| F12                   |  |
| B12                   |  |

# Invacare® Top End® T5™ 7000 Series Tennis Wheelchair



Custom frames may have stylistic variations. Dimensional properties and tolerances committed to by Top End are defined in the Measurement Definitions Documents, which can be found in the resource center on [www.topendwheelchair.com](http://www.topendwheelchair.com)

## PRODUCT GUIDE: SUGGESTED WHEELBASE:

| WHEELBASE BASED ON REAR SEAT TO FLOOR HEIGHT (GREATER OR EQUAL TO 19.0") |       |            |            |       |       |       |       |       |       |       |
|--|-------|------------|------------|-------|-------|-------|-------|-------|-------|-------|
| CENTER OF GRAVITY  | FIXED | ADJUSTABLE | SEAT DEPTH |       |       |       |       |       |       |       |
|  |       |            | 12.0"      | 13.0" | 14.0" | 15.0" | 16.0" | 17.0" | 18.0" | 19.0" |
|  | 4.5"  | --         | 17.5"      | 17.5" | 18.5" | 18.5" | 19.5" | 20.5" | 22.5" | 22.5" |
|  | 5.0"  | 3"-5"      | 17.0"      | 17.0" | 18.0" | 18.0" | 19.0" | 20.0" | 22.0" | 22.0" |
|  | 5.5"  | --         | 16.5"      | 16.5" | 17.5" | 17.5" | 18.5" | 19.5" | 21.5" | 21.5" |
|  | 6.0"  | 4"-6"      | 16.0"      | 16.0" | 17.0" | 17.0" | 18.0" | 19.0" | 21.0" | 21.0" |
|  | 6.5"  | --         | 15.5"      | 15.5" | 16.5" | 16.5" | 17.5" | 18.5" | 20.5" | 20.5" |
|  | 7.0"  | 5"-7"      | 15.0"      | 15.0" | 16.0" | 16.0" | 17.0" | 18.0" | 20.0" | 20.0" |
|  | 7.5"  | --         | 14.5"      | 14.5" | 15.5" | 15.5" | 16.5" | 17.5" | 19.5" | 19.5" |
|  | 8.0"  | --         | 14.0"      | 14.0" | 15.0" | 15.0" | 16.0" | 17.0" | 19.0" | 19.0" |

| WHEELBASE BASED ON REAR SEAT TO FLOOR HEIGHT (LESS THAN 19.0") |       |            |            |       |       |       |       |       |       |       |
|--|-------|------------|------------|-------|-------|-------|-------|-------|-------|-------|
| CENTER OF GRAVITY  | FIXED | ADJUSTABLE | SEAT DEPTH |       |       |       |       |       |       |       |
|  |       |            | 12.0"      | 13.0" | 14.0" | 15.0" | 16.0" | 17.0" | 18.0" | 19.0" |
|  | 4.5"  | --         | 16.5"      | 16.5" | 17.5" | 17.5" | 18.0" | 19.0" | 20.0" | 21.0" |
|  | 5.0"  | 3"-5"      | 16.0"      | 16.0" | 17.0" | 17.0" | 17.5" | 18.5" | 19.5" | 20.5" |
|  | 5.5"  | --         | 15.5"      | 15.5" | 16.5" | 16.5" | 17.0" | 18.0" | 19.0" | 20.0" |
|  | 6.0"  | 4"-6"      | 15.0"      | 15.0" | 16.0" | 16.0" | 16.5" | 17.5" | 18.5" | 19.5" |
|  | 6.5"  | --         | 14.5"      | 14.5" | 15.5" | 15.5" | 16.0" | 17.0" | 18.0" | 19.0" |
|  | 7.0"  | 5"-7"      | 14.0"      | 14.0" | 15.0" | 15.0" | 15.5" | 16.5" | 17.5" | 18.5" |
|  | 7.5"  | --         | 13.5"      | 13.5" | 14.5" | 14.5" | 15.0" | 16.0" | 17.0" | 18.0" |
|  | 8.0"  | --         | 13.0"      | 13.0" | 14.0" | 14.0" | 14.5" | 15.5" | 16.5" | 17.5" |

## WHEEL SIZE GUIDE:

| Player Specifications:  | Junior's / Short Arms | Adult / 3.0 or Lower | Adult / 3.5 or Higher |
|-------------------------|-----------------------|----------------------|-----------------------|
| Rear Seat Height:       | 16.0" or less         | 16.5" to 19.0"       | 19.0" to 21.0"        |
| Recommended Wheel Size: | 24"                   | 25"                  | 26"                   |

## EXCLUSIONS:

|                               |   |
|-------------------------------|---|
| Adjustable Center of Gravity: | - Not available with Fixed Side Guards or Welded Side Guards.                     |
| High Performance Wheels:      | - Custom Spoke Colors are not available.<br>- Not available with 12 Tab Handrims. |

## PRODUCT SPECIFICATIONS:

|                         |   |
|-------------------------|---|
| Weight Capacity:        | 250 pounds (113 Kilograms) or 350 pounds (159 Kilograms) with the Heavy Duty Option |
| Approximate Box Weight: | 44 pounds (20 Kilograms)  |
| Box Dimensions:         | 41" x 28" x 28" or 41" x 28" x 33" depending on size of chair.                      |

## DEFINITIONS:

|  |  |
|--|--|
| Assembly and Shipping:                 | Arrives factory assembled, rear wheels and some accessories will need to be installed. Shipping rate is \$150 for all shipments in the continental US. Freight quotes for shipments outside the continental US are available upon request.   |
| Heavy Duty Frame:                      | When Heavy Duty is chosen, the frame will be made out of 1-1/8" 7000 series aluminum and the weight capacity is increased to 350 pounds.   |
| Extra Frame Depth:                     | When Extra Frame Depth is chosen the seat upholstery will stop at the selected Seat Depth and the frame will continue beyond. The extra frame is often used to help transfer in and out of the chair.  |
| Tapered Seat and Footrest Width:       | When a tapered seat width is chosen the footrest width will be 2" less than the front seat width unless otherwise noted in the specials section.   |
| Footrest Location:                     | Measured as the Front Frame Angle (front frame angle to the footrest)  |
| Wheelbase:                             | Wheelbase is measured from the middle of the rear axle to the middle of the caster head tube. See Diagram 2.   |
| Upholstery Color:                      | When camouflage upholstery color is chosen and a seat cushion is chosen, both will be camouflage.  |
| Leather Flap with Aluminum Dome Plugs: | When the Leather Upgrade is chosen the flaps (part of the upholstery that goes down over the back posts) will be made of leather. Also, the caps on the backrest post will be aluminum. This is used to help reinforce the back upholstery and help prevent tearing.   |
| Buffed Aluminum Frame:                 | When the Buffed Aluminum Frame Color is chosen the frame will have no paint. The frame tubes will be run through a buffer and then hand buffed. Decals will be applied. This option is generally chosen when a person wants a natural aluminum color/look to the chair and/or to avoid the chipped paint look. |

## Warranty Info:

Invacare warrants the frames when purchased new and unused to be free from defects in materials and workmanship for a period of three (3) years from the date of purchase from Invacare or a dealer, with a copy of the seller's invoice required for coverage under this warranty. Invacare warrants the upholstered materials (seat and back) and remaining components of this product when purchased new and unused to be free from defects in materials and workmanship for a period of thirteen (13) months from date of purchase from Invacare or a dealer, with a copy of the seller's invoice required for coverage under this warranty