

## New Folding, Portable, Upholstered Commode with Wheels and Drop Arm

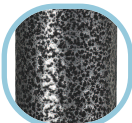
CHROME MODEL SHOWN

**COMES STANDARD  
WITH PADDED SEAT.**

**TOOL FREE  
ASSEMBLY**



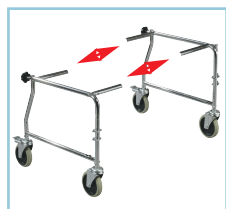
**ALSO  
AVAILABLE  
IN SILVER  
VEIN FINISH**



**11120KD-1  
SHOWN WITH  
FOOTRESTS  
(NOT INCLUDED)**



11120KD-1



11120KD-1

11120KD-1



11120KD-1



**NEW REINFORCED  
TOOL FREE BACK  
REST DESIGN.**



**3" NON-SKID, RUST  
RESISTANT, SWIVEL CASTERS.  
TWO WITH LOCKS!**



11114KD-1

- 11120SV-1 Assembled, Silver Vein,  
(Has replaced 11120-1), 1/cs
- 11120KD-1 Knock Down, Tool Free Assembly,  
Chrome 1/cs
- 11120KDN-1 Knock Down, Folding, Tool Free Assembly,  
Chrome 1/cs
- PSTDSF-TF Swing-away Tool Free Footrests, (Plastic)  
(For use on 11120SV-1), 1 pr/cs
- 11120B Commode Bucket for 11120, 1/cs
- 11120-SP Replacement Seat, 1/cs
- 11120-S Replacement Seat Pad, 1/cs
- STDSF-TF Swing-away Footrests Tool Free, (Metal)  
(For use on 11120KD-1), 1 pr/cs

### FEATURES:

- Chrome plated or Silver Vein coated steel tubing frame with welded construction.
- Drop arm allows for safe lateral patient transfers to and from commode.
- Swing-away and detachable footrests (sold separately).
- Injection molded large plastic toilet seat, 12 quart bucket and cover come standard.
- Back can be easily removed without tools.
- Rust resistant, swivel casters (2 with locks).
- Can be shipped via UPS.
- **Limited Lifetime Warranty.**

### K.D. Aluminum Shower Chair/Commode with Casters



- 11114KD-1 Knock Down,  
(Has replaced 11114-2), 1/cs
- 11114SEAT Replacement Seat, 1/cs

### FEATURES:

- Easily assembles without tools.
- **3" Non-skid, rust resistant, swivel casters (2 rear locking).**
- Anodized aluminum frame.
- Back removes for easy cleaning (tool free).
- Comes with removable 12 qt. commode bucket and cover.
- Plastic armrests.
- Padded, open front, vinyl toilet seat.
- **Limited Lifetime Warranty.**

### EASILY ASSEMBLED WITHOUT TOOLS!



11114KD-1



11114KD-1



11114KD-1



11114KD-1

### SPECIFICATIONS

Item #	Width (between arms)	Outside Width	Width Seat	Depth Seat	Height (highest)	Height (lowest)	Product Weight	Carton Shipping Weight	Weight Limit
11120KD-1	18"	22"	17"	17"	20"	20"	35 lbs.	39 lbs.	350 lbs.
11120SV-1	18"	22"	17"	17"	20"	20"	35 lbs.	39 lbs.	350 lbs.
11114KD-1	18" (8" ARM HEIGHT)	21.5"	16"	16"	21"	21"	14.10 lbs.	18.1 lbs.	300 lbs.

\*Important Notice: Item numbers that display an asterisk (\*) reflect an item that will be discontinued or package change.

commodes

drive

To order call toll free: 877.224.0946

WWW.DRIVEMEDICAL.COM